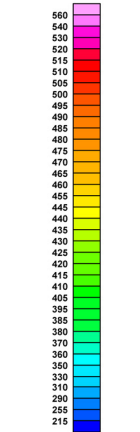
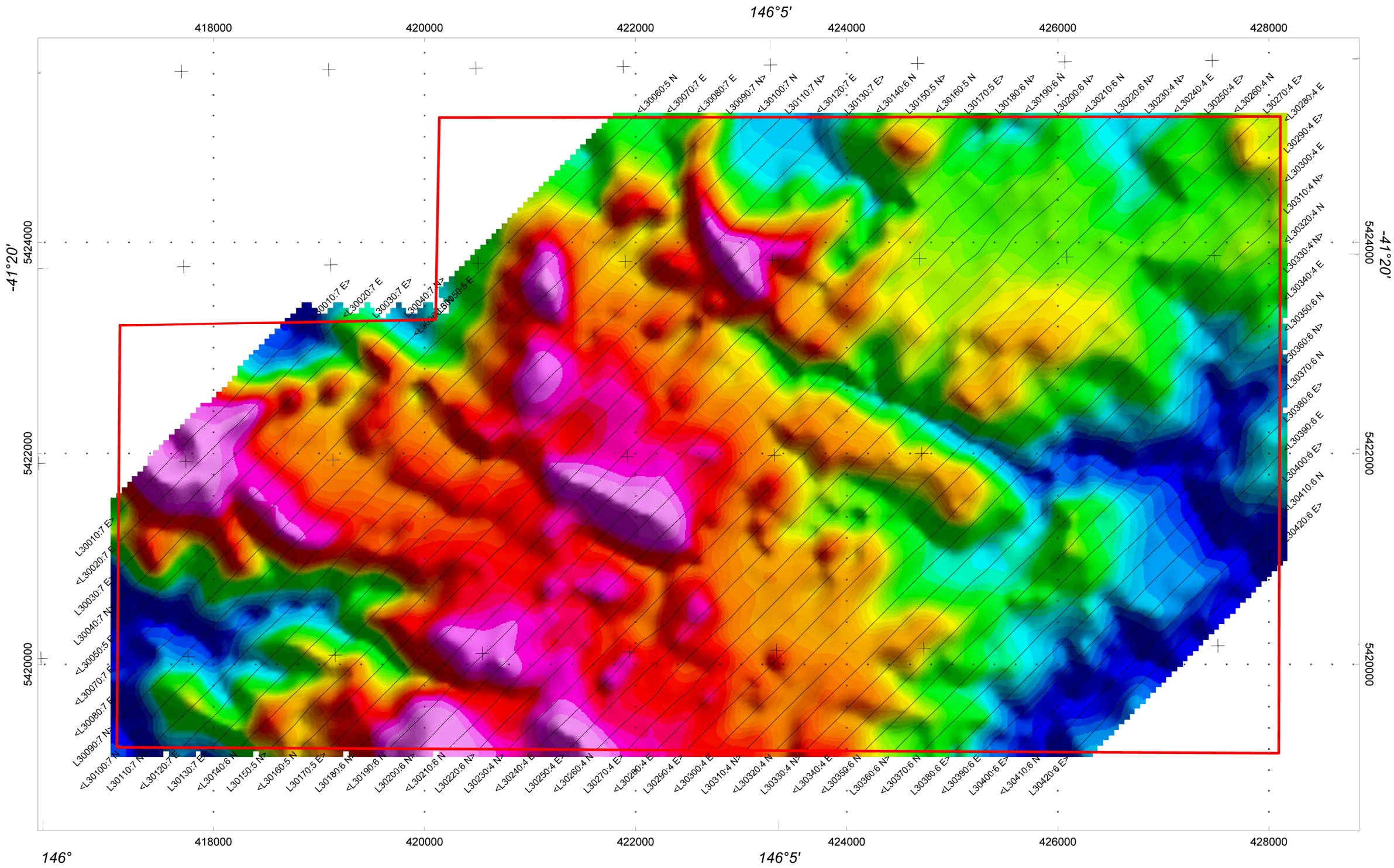
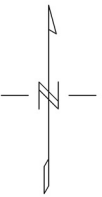


Survey Specifications:
Aircraft: AS350 B3 helicopter, Registration VH-IPW
Flight Line Spacing: 200 metres
Nominal terrain clearance 80 metres
EM Loop is 42 metres beneath helicopter
Magnetic sensor is 10.6 metres beneath helicopter

Instruments:
Geotech Time Domain Electromagnetic System (VTEM 12)
with concentric Rx/Tx geometry, Bucking Coil
Transmitter Loop Diameter 26 m, Base Frequency 25Hz
Dipole Moment 424,528 N/A
Transmitter Wave Form: Trapezoid, Pulse Width 7.35 ms
Geometrics Optically-pumped, G823A
High Sensitivity Cesium Magnetometer
Mag Resolution 0.02 nT at 10 samples/sec



Digital Elevation
(metres)



Scale 1:25000
250 0 250 500 750 1000 1250
(meters)
GDA94 / Map Grid of Australia zone 55

Zinifex Limited
Tasmania
Block 3

Geotech VTEM System
Digital Elevation Model

Flown and processed by Geotech Airborne Pty Ltd.
Unit 1, 29 Mulgool Road, Malaga
Western Australia, 6090
www.geotechairborne.com

March-April 2008

August 2008